

# eTECH LED P-CS Tunable Flat Panel Series

## Installation Instructions



### WARNING RISK OF ELECTRICAL SHOCK IMPORTANT SAFEGUARDS

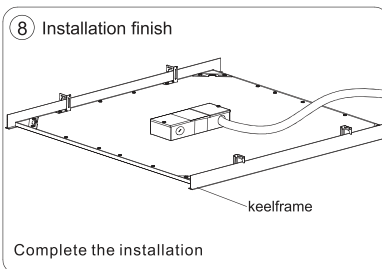
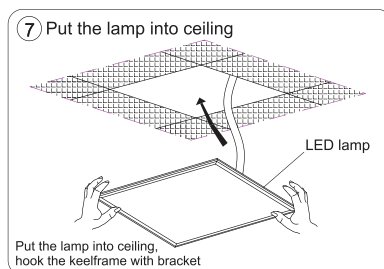
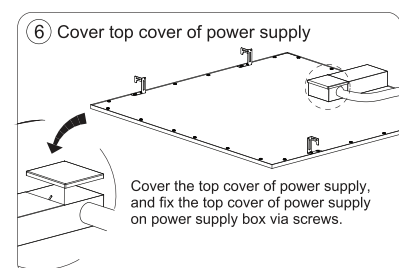
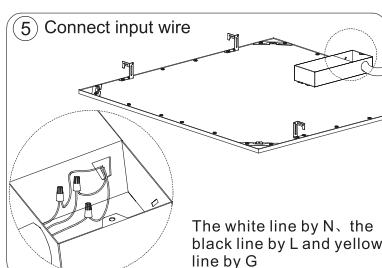
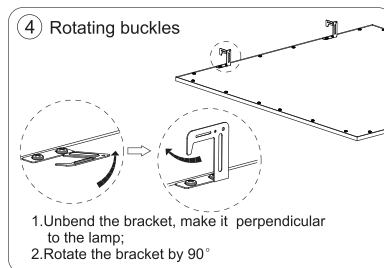
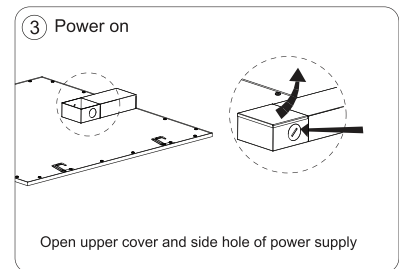
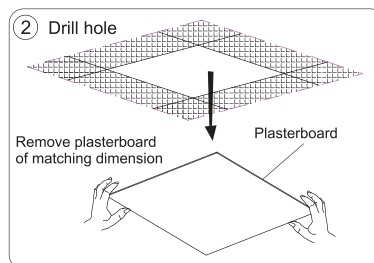
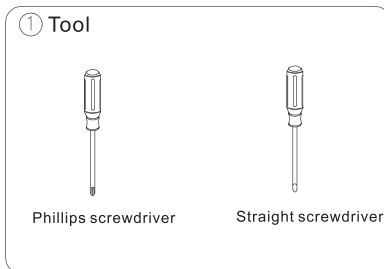
#### READ AND FOLLOW ALL SAFETY INSTRUCTIONS.

To ensure safety and rated lifespan, this product must be installed according to these instructions by qualified persons only. Do not use this equipment for other than the intended use.

#### WARNINGS:

- 1. WARNING** - Risk of fire or electrical shock. Installation of this product requires knowledge of luminaires electrical systems. If not qualified, do not attempt installation.
- Risk of electric shock - Use in dry location only.
- Risk of electric shock - Use supplied power supply only. Do not use any other power supply or related devices.
- No construction changes of the luminaire are permitted, except in accomplishing the wiring of the luminaire as diagramed herein.
- This luminaire is UL listed as Type IC and is suitable for insulation contact when installed as directed without alterations or construction changes to the luminaire.
- This product should be installed according to NED 410.16C or other codes in effect for the installation location.

### Embedded Installation



**eTech LED LLC**

2559 Badger Ave  
Oshkosh WI 54904  
920 - 267 6109

[www.eteched.com](http://www.eteched.com)