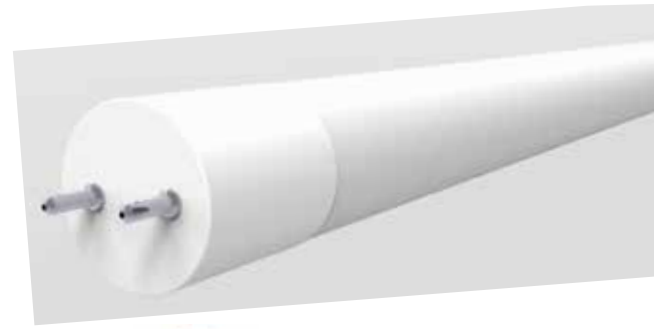


T8 - A6NP Series

External Power Nano Plastic - Type C



SPECIFICATION FEATURES & BENEFITS

- ▶ High efficiency LED T8 tube for new installation or troffer retrofit in a wide range of commercial and industrial G13 Socket applications.
- ▶ 0-10VDC dimmable power supply dimming, occupancy and daylight harvesting system control.
- ▶ UL Type C system provides safer low voltage troffer installation and operation.
- ▶ Shatter proof Nano Plastic housing for light weight and durable service.
- ▶ Wide range of power supply models accurately match drive currents to optimize LED efficiency and lifespan.
- ▶ Meets National Sanitation Foundation (NSF) standards.



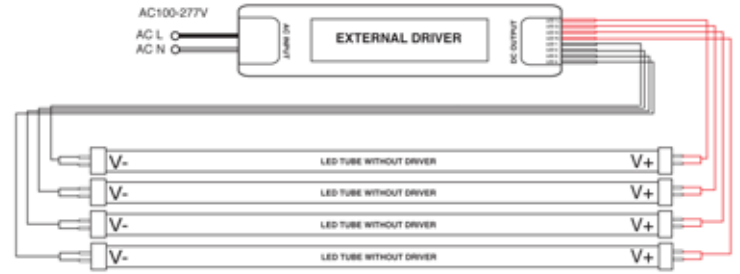
SPECIFICATION SUMMARY

Model: EXPS	T82 - A6NP -10	T84 - A6NP - 12	T84 - A6NP - 15	T84 - A6NP - 18
Lm/W:	>140	>140	>130	>130
Wattage @ 5000K:	10.3	12.2	14.7	18
Lumens @ 5000K:	>1440	>1700	>1900	>2340
CRI:	>82	>82	>82	>82
THD @ 120VAC:	7.04	4.87	7.38	4.68
Power Supply:	Use only ETech A11 Series - 100-277VAC / Class 2 / Dimming & Non-Dimming option			
Controls Compatibility:	0-10VDC Dimming / Controls Interface			
Connection / Lamp Base:	Double End Connection / G13 Bi-pin			
CCT Options:	3500K / 4000K / 5000K			
Lamp Compliance:	UL / RoHS	DLC / UL / RoHS		
L70 Lifespan:	68,000 Hrs.			
Beam Angle	300°			
Length / Diameter:	23.62in / 1.02in	47.24in / 1.02in		
Weight:	6.5oz. / 185g	13oz. / 370g		
Operation Temperature:	-20°C to +40°C Ambient			
Limited Warranty:	5 Years Standard			

Notes: All values nominal. Refer to eTech recommended power supply spec. sheet for specifications and configurations.

T8 - A6 Series

External Power - Type C Lamp



EXTERNAL POWER SUPPLY SELECTION GUIDE

Recommended Model	T8 -1 Tube	Operating Current (mA)	T8 - 2 Tube	Operating Current (mA)	T8 - 3 Tube	Operating Current (mA)	T8 - 4 Tube	Operating Current (mA)
EXPS-10-A11-D/ND	1-10W / 1-12W	300 / 300	X	X	X	X	X	X
EXPS-15-A11-D/ND	1-12W / 1-15W	380 / 380	X	X	X	X	X	X
EXPS-22-A11-D/ND	1-18W / 1-22W	540 / 540	2-10W	540	X	X	X	X
EXPS-25-A11-D/ND	X	X	2-10W / 2-12W	650 / 650	X	X	X	X
EXPS-30-A11-D/ND	X	X	2-15W	700	3- 10W	700	X	X
EXPS-40-A11-D/ND	X	X	2-18W	1100	3-10W / 3-12W / 3-15W	900 / 900 / 1100	4-10W	1100
EXPS-50-A11-D/ND	X	X	X	X	3-18W	1500	4-10W / 4-12W / 4-15W	1200 / 1470 / 1470
EXPS-60-A11-D/ND	X	X	X	X	3-18W	1680	X	X
EXPS-75-A11-D/ND	X	X	X	X	X	X	4 - 18W	1200

Model	Product Dimensions	Psc. / Carton	G.W. / Carton	Carton Size
EXPS-T82-A6	23.62in x 1.02in	42	6.9kg	65x22x25cm
EXPS-T84-A6	47.24in x 1.02in	42	10.2kg	126x22x25cm

PART NUMBER SPECIFICATION				Part Number Example: EXPS-T82-A6NP-10-35-D	
EXPS -	-	-	-	-	- D
Series	Length / Series	Nominal Wattage	CCT Option	Dimming Option	
External Power Supply - UL Type C Series	T82 - A6NP (2ft Nano Plastic)	10 (10 Watts)	35 (3500K) 40 (4000K) 50 (5000K)	D (0-10VDC Dimming)	
	T84 - A6NP (4ft Nano Plastic)	12 (12 Watts) 15 (15 Watts) 18 (18 Watts)			

PROJECT SPECIFICATION		
Project:	Part Numbers:	Quantity:
Approved:		
Date:		